

# WH9500

Spheroidal graphite iron structure

Ratio 30 :1

Reduction unit with worm wheel and irreversible worm-screw. Reverse motion is possible only when the operator pulls the operating lever. Therefore this reduction system requires no brakes.

Manual drum clutch for drum engagement – disengagement

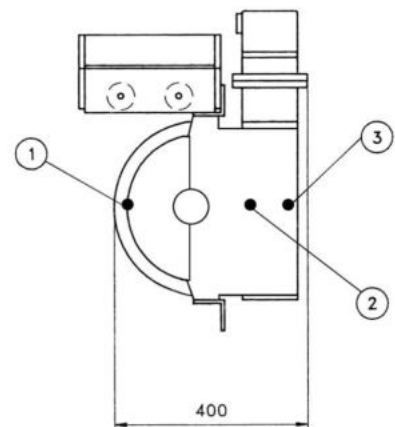
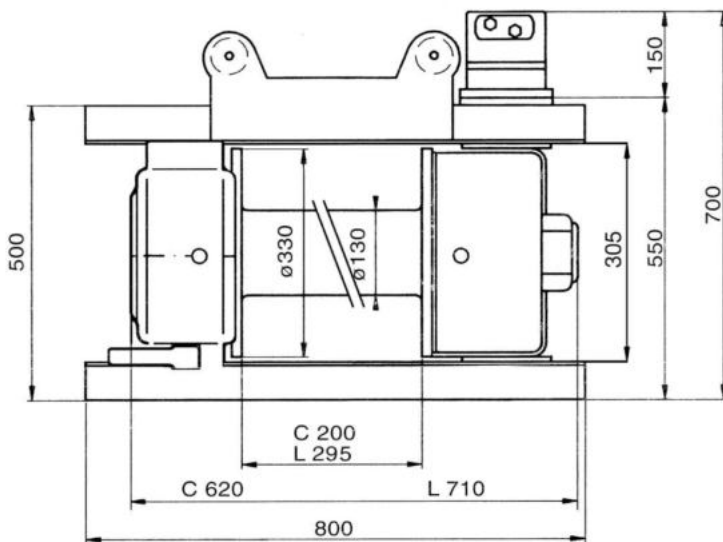
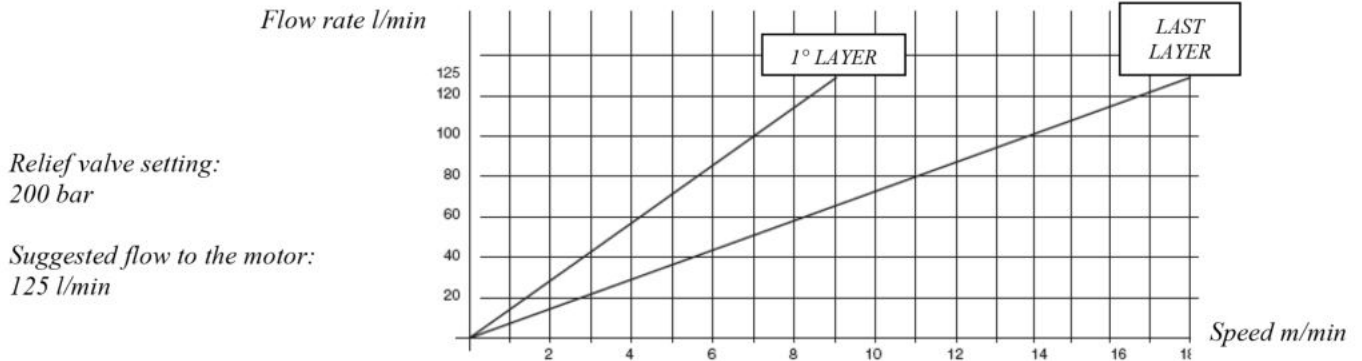
1<sup>st</sup> cable layer pulling capacity measured by dynamometer: 9500 kg

Zinc-plated steel cable guide with sliding rollers for long drum version

Recommended cable (extra): Ø 18 mm - max. cable capacity: 50 m

Total weight without cable: 215 kg

## Cable winding speed diagram



CABLE LAYER	LINE PULL	CABLE LENGTH
1 <sup>st</sup>	9461 kg	6,5 m
2 <sup>nd</sup>	7409 kg	14,8 m
3 <sup>rd</sup>	6089 kg	33,3 m
4 <sup>th</sup>	5256 kg	45,1 m
5 <sup>th</sup>	4624 kg	58,5 m
Max. cable capacity: 50 m Ø 18 mm		

- 1 - Oil filling plug
- 2 - Oil level plug
- 3 - Oil drain plug